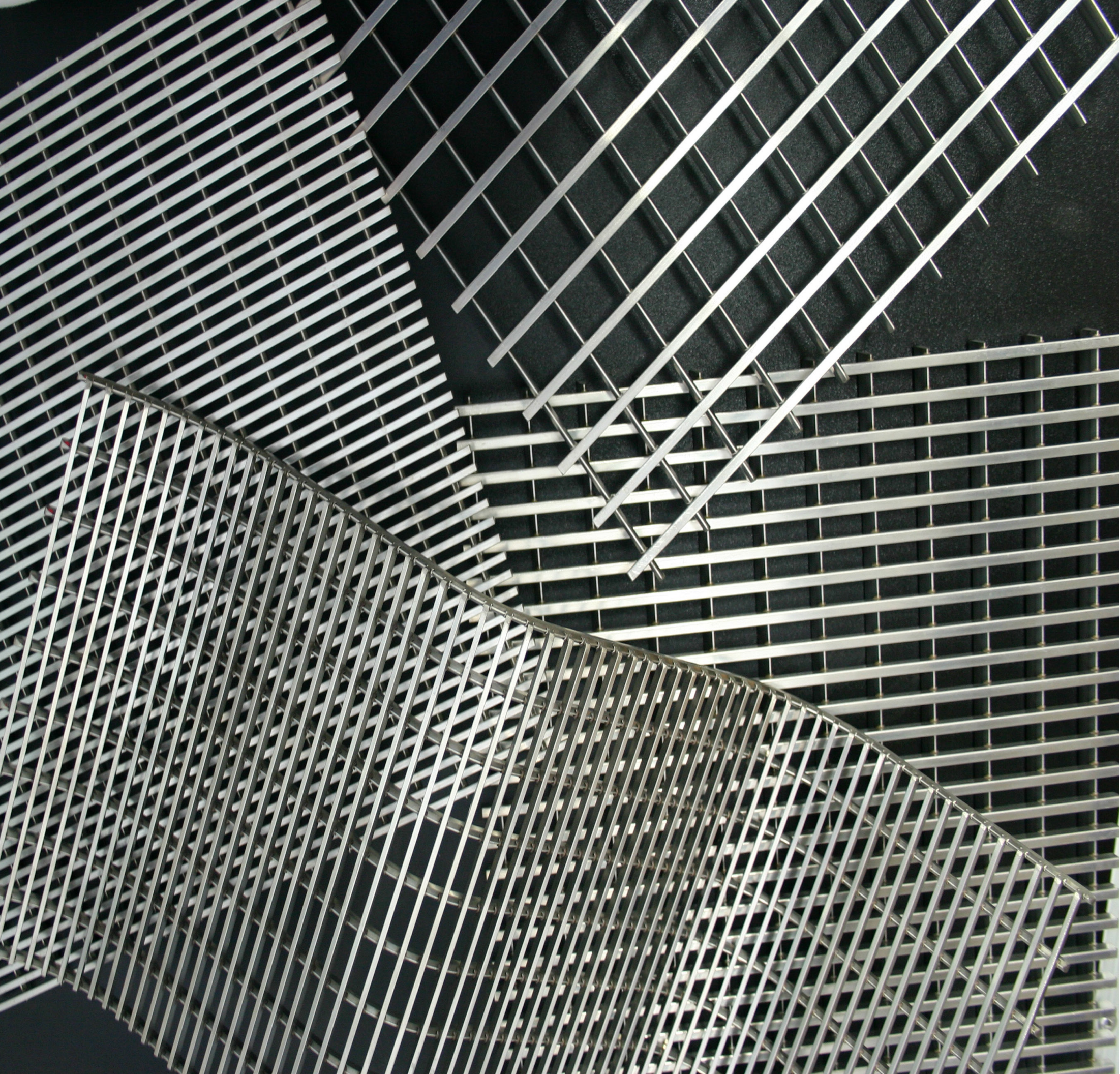




JOHNSON
ARCHITECTURAL
ELEMENTS



WELCOME

Dare to Design the Future

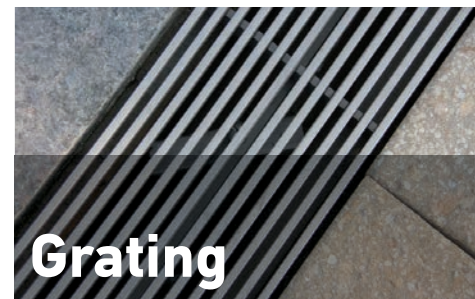
From the first flicker of an idea for a stunning space through the details of planning and documentation, Johnson Architectural Elements is a trusted partner for bringing your vision to life.

Drawing on more than century of screen manufacturing innovation, we consult with you to explore boundary-bending possibilities, respectfully consider the requirements of your project and draft customized technical solutions that create excellence in both form and function.

Your next architectural adventure awaits—count on us for the highest engineering standards, precision in fabrication and a collaborative relationship where imagination becomes reality.



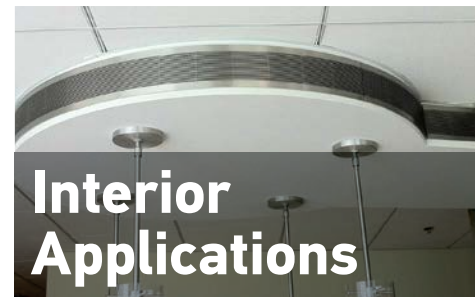
**Lighting
Elements**



Grating



**Landscape
Elements**



**Interior
Applications**



**Exterior
Facades**



**Art &
Sculptures**



**Custom &
Applications**

Lighting Elements



INSPIRATION IN PRACTICE

Lighting Elements

Dramatic designs coupled with illumination and way-finding functionality.

Johnson Architectural Elements create unique lighting elements from delicate bollards to clusters of towering light masts.

- Light Masts
- Light Fixtures
- Accent Elements

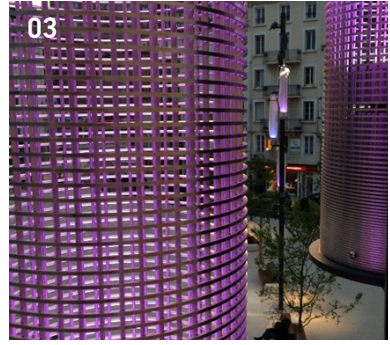
- 01. South Pointe Park – Miami Beach, FL, USA
Light Masts
- 02. Centre Village – Minneapolis, MN, USA
Light Masts
- 03. City Square – Annonay, France
Lights
- 04. The University of Chicago – Chicago, IL, USA
Light Masts — A James Carpenter Design
- 05 . | 06. Office building – Minneapolis, MN, USA
Lights
- 07. University of Alaska – Anchorage, AK, USA
Light Masts
- 08. Hotel Kube – Paris, France
Lighting Columns



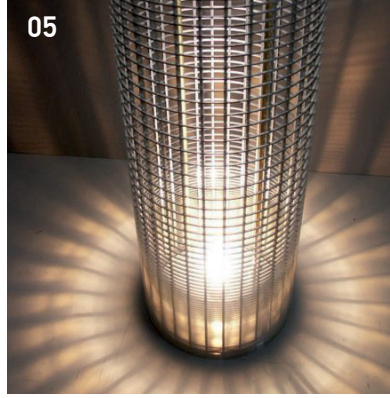
01



02



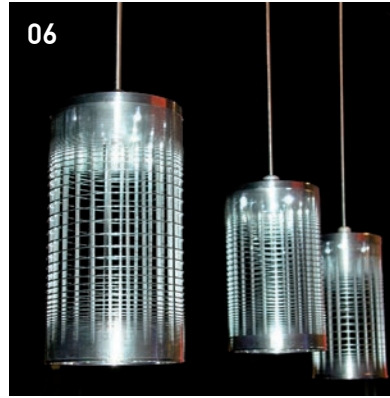
03



05



04



06



07



08

Grating

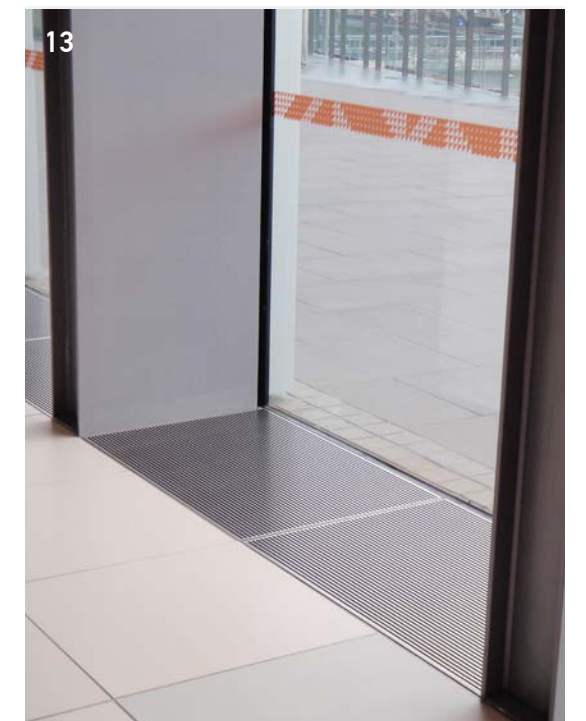
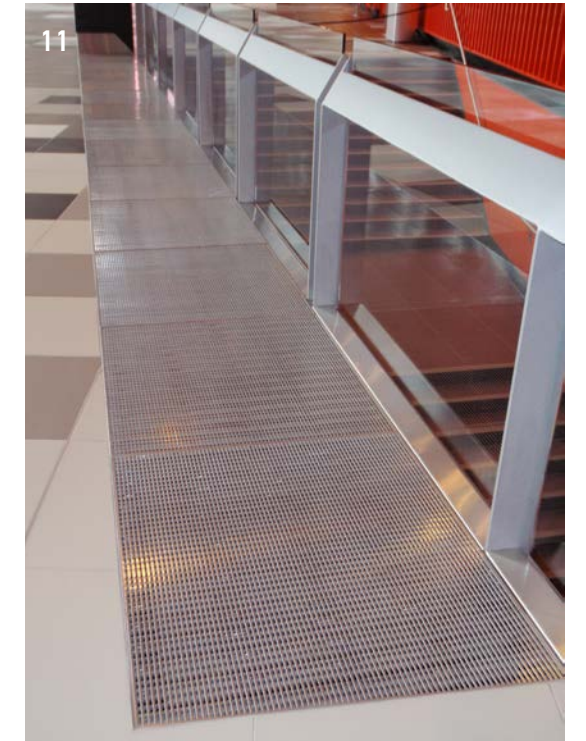


INSPIRATION IN PRACTICE

Grating

Johnson Architectural Elements' proprietary manufacturing process allows for increased resistance in the screen, while keeping the visual transparency. Material, dimensions, finish and load capacity are calculated by engineers to ensure that technical requirements are met.

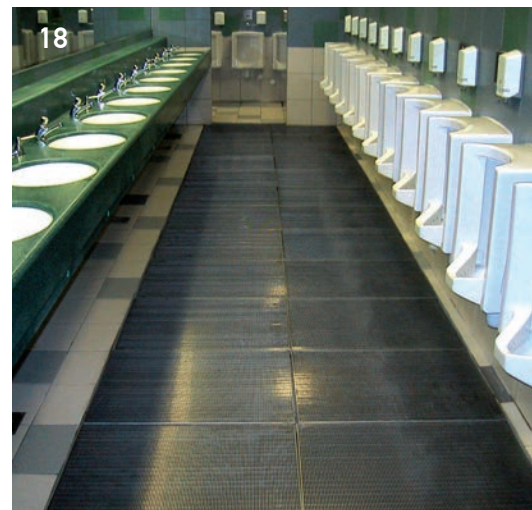
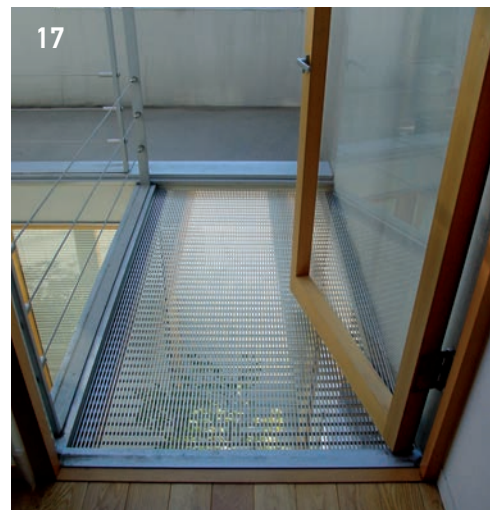
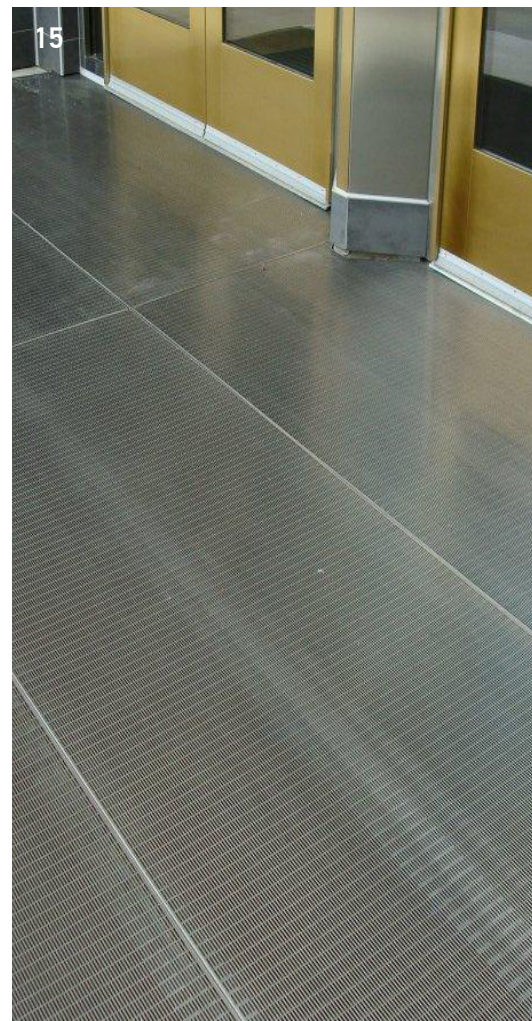
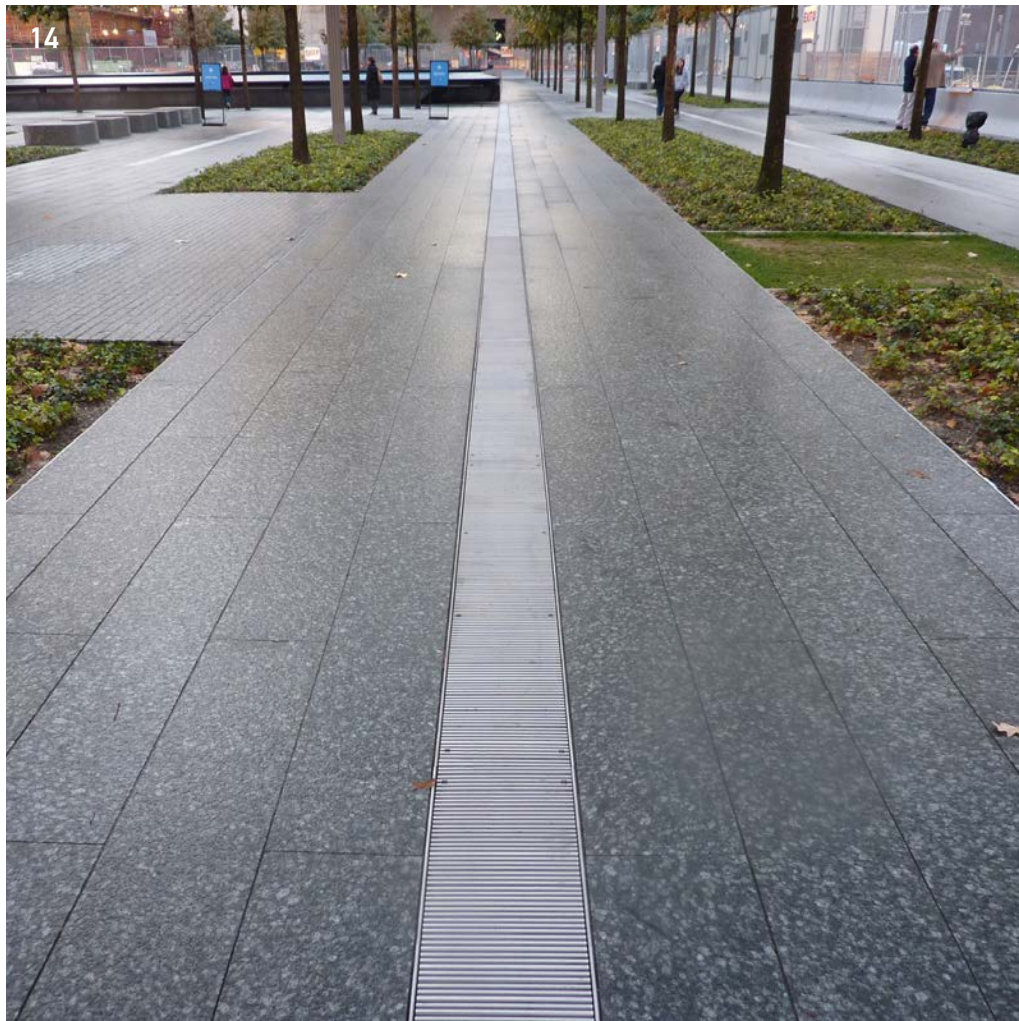
- Ventilation Grates
- Drainage Grates
- Wheelchair Access Ramps
- Stairs and Footbridges



09. St. Cloud Hospital – St. Cloud, MN, USA
Floor Grating

10.| 11.| 13. Melbourne Convention and Exhibition Centre –
Melbourne, Australia Floor Grating

12. Residence Inn – New York, NY, USA
Floor Grating



SUPPORT

Manufacturing Expertise

Evolved from the legacy of Johnson Screens, Johnson Architectural Elements has vast experience in stainless steel welding and shaping that you won't find anywhere else. An exclusive architectural manufacturing team, plus fabricators and welders are devoted to delivering the highest quality materials.

14. World Trade Center – New York, NY, USA
Drainage Grating

15. Wells Fargo Bank – Minneapolis, MN, USA
Floor Grating

16. Pousada de Santa Marinha –
Guimarães, Portugal
Wheelchair Access Ramp

17. Office building – Susono, Japan
Interior Footbridge

18. Public restroom – Sydney, Australia
Drain and Floor Grating

19. Lincoln Center – New York, NY, USA
Floor Grates

20. Broad Street – New York, NY, USA
Swimming Pool Drain, Trench and
Surrounding Grates

21. Victoria Bridge – Townsville, Australia
Drainage Grates

22. Hotel Kube – Paris, France
Floor Grates with Integrated Lights

Landscape Elements





INSPIRATION IN PRACTICE

Landscape Elements

Versatile, stable and functional — Johnson Architectural Elements stainless steel products are ideal for spaces, surfaces and other functional elements in exterior applications.

- Benches/Seats
- Fences
- Garbage Cans
- Tree Surrounds
- Bollards
- Handrails
- Walkway Grates

- 23. Accenture Tower – Minneapolis, MN, USA
Bench Seats
- 24. UBS Financial Services – St. Paul, MN, USA
Flag Pole Cover
- 25. Baldwin Public Library – Birmingham, MI, USA
Security Gate
- 26. City Square – Melbourne, Australia
Footbridge
- 27. Frankston Railway Station – Melbourne, Australia
Seats
- 28. Office complex – Sydney, Australia
Bollard with Integrated Lights
- 29. University of Western Sydney – Sydney, Australia
Bench Seats
- 30. Office building – Brisbane, Australia
Garbage Can
- 31. Private residence – Brisbane, Australia
Handrails and Stairs
- 32. Hoboken Pier – Hoboken, NJ, USA
Handrails — A James Carpenter Design
- 33. RMT University – Melbourne, Australia
Tree Surrounds and Grating
- 34. Battery Park City – New York, NY, USA
Fence — Rogers Partners & James Carpenter Design



Interior Applications



INSPIRATION IN PRACTICE

Interior Applications

Johnson Architectural Elements can design and manufacture screens that protect, cover and secure various utility items — all while adding a stunning visual element to the surroundings.



36



37



38



39

- Ventilation Covers
- Wall Covers
- Room Dividers
- Internal Security Gates

- 35. Boe Valley College – Calgary, AB, Canada
Security Screen
- 36. Johnson Bank – Madison, WI, USA.
Interior Accents
- 37. Grant Thornton – Los Angeles, CA, USA
Privacy Screen
- 38. Weatherford International – Houston, TX, USA
Interior Accents
- 39. Heathrow Airport – London, England
Utility Cover



INSPIRATION IN PRACTICE

Vertical Columns

Johnson Architectural Elements' vertical columns, will transform construction structures and technical service columns into a stunning decorative element. Construction specifications will be defined, depending on the technical and visual aspect requirements.

- 40. Century College – White Bear Lake, MN, USA
Column Covers
- 41. Cafétéria d'entreprise – Paris La Défense, France
Structural Column Cladding
- 42. Kew Gardens Train Station – New York, NY, USA
Column Covers
- 43. Torrey Pines Bank – Los Angeles, CA, USA
Column Covers

Exterior Facades

45



46



47



48



INSPIRATION IN PRACTICE

Exterior Facades

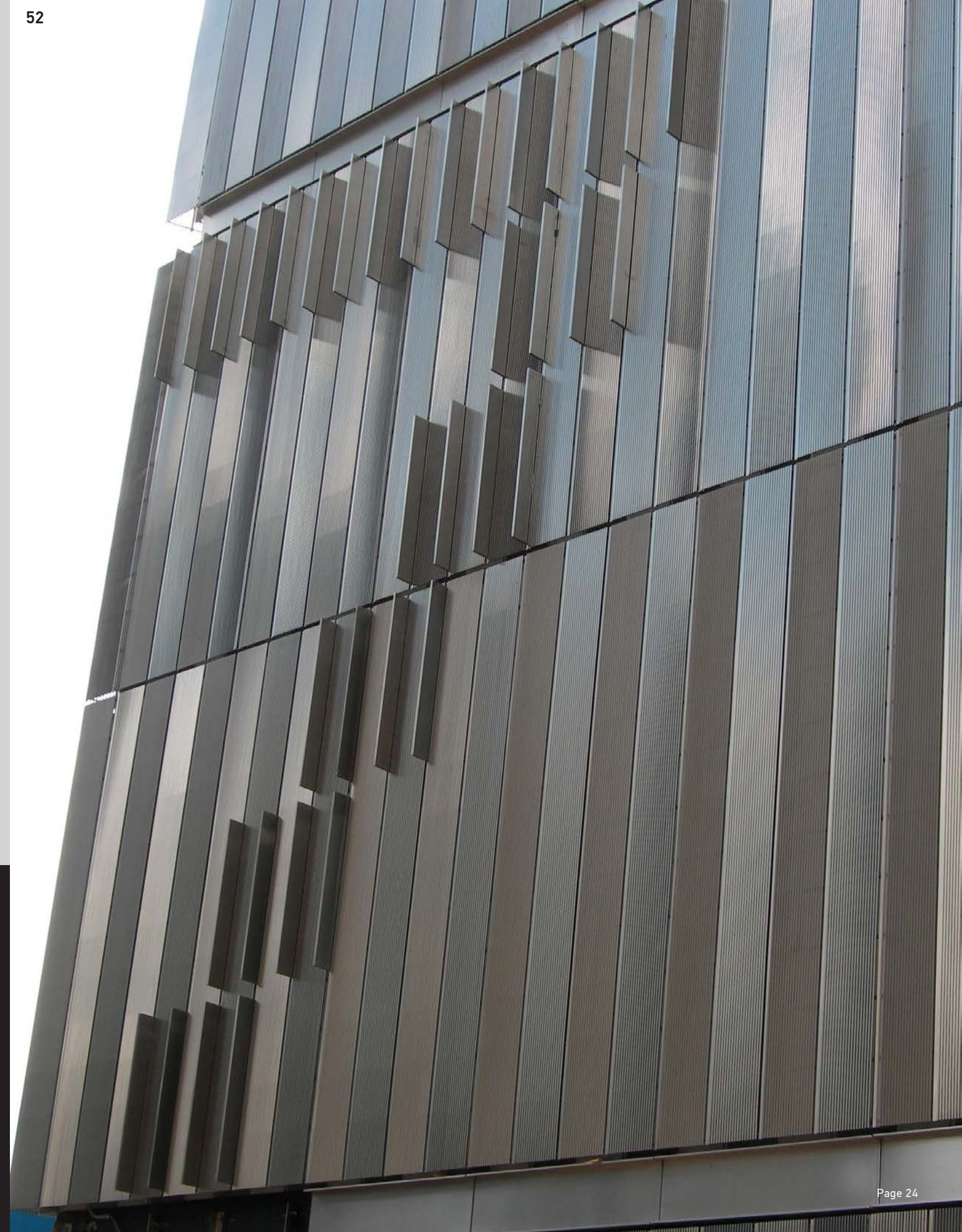
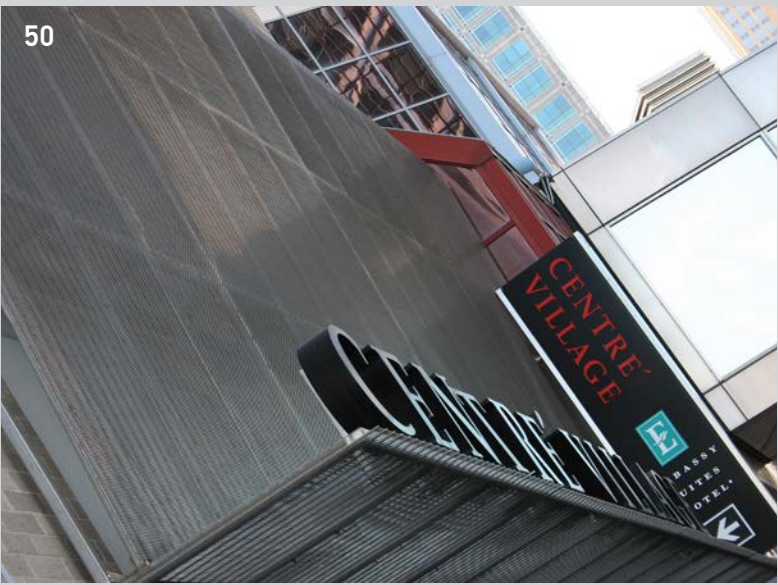
By varying the shape, size and tilt of the wire used, light can be filtered or directed in a variety of ways using Johnson Architectural Elements' exterior facades. Custom exterior facades can hide technical equipment, protect glass windows from impacts and provide a dramatic effect when backlit at night.

44. 7 World Trade Center – New York, NY, USA
Exterior Facade and Wall Cladding —
A James Carpenter Design

45. Guthrie Theater – Minneapolis, MN, USA
Sun Shade

46. Main Fargo Public Library – Fargo, ND, USA
Sun Shade

47. | 48. 7 World Trade Center – New York, NY, USA
Exterior Facade and Wall Cladding —
A James Carpenter Design

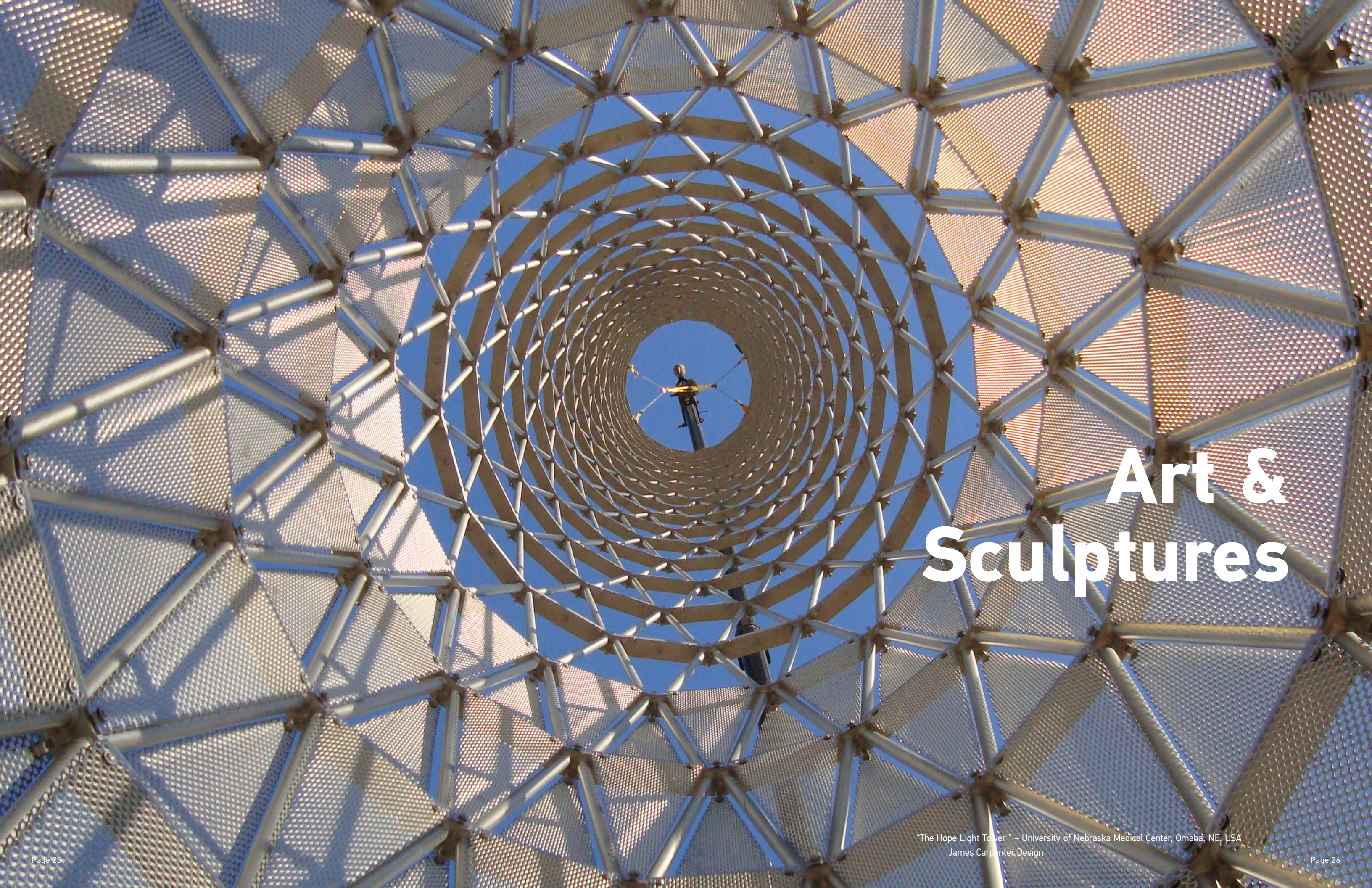


INSPIRATION IN PRACTICE

Where Form and Function Find Their Balance

Once you have a concept in mind, Johnson Architectural Elements helps to build the framework for the materials in the project. Rely on us to assist with calculations on horizontal and vertical applications, determine material options that work within a specified percentage open areas, predict installation issues and look at load requirements—all while keeping an eye on your objectives and aesthetic preferences.

- 49. Stuyvesant Town – New York, NY, USA
Exterior Sign
- 50. Centre ' Village – Minneapolis, MN, USA
Exterior Facade
- 51. Firehouse 277 – Brooklyn, NY, USA
Exterior Facade
- 52. 7 World Trade Center – New York, NY, USA
Exterior Facade and Wall Cladding —
A James Carpenter Design



Art & Sculptures

"The Hope Light Tower" – University of Nebraska Medical Center, Omaha, NE, USA
James Carpenter Design



INSPIRATION IN PRACTICE

Art & Sculptures

Johnson Architectural Elements has collaborated with local, national and international artists and designers to engineer exclusive monuments and structures that reflect their unique vision.

53. "The Hope" Light Tower – University of Nebraska Medical Center, Omaha, NE, USA Art Sculpture – A James Carpenter Design

54. The Yards Park – Washington, DC, USA Art Sculpture – A James Carpenter Design ©The Yards Park

PAGE 28

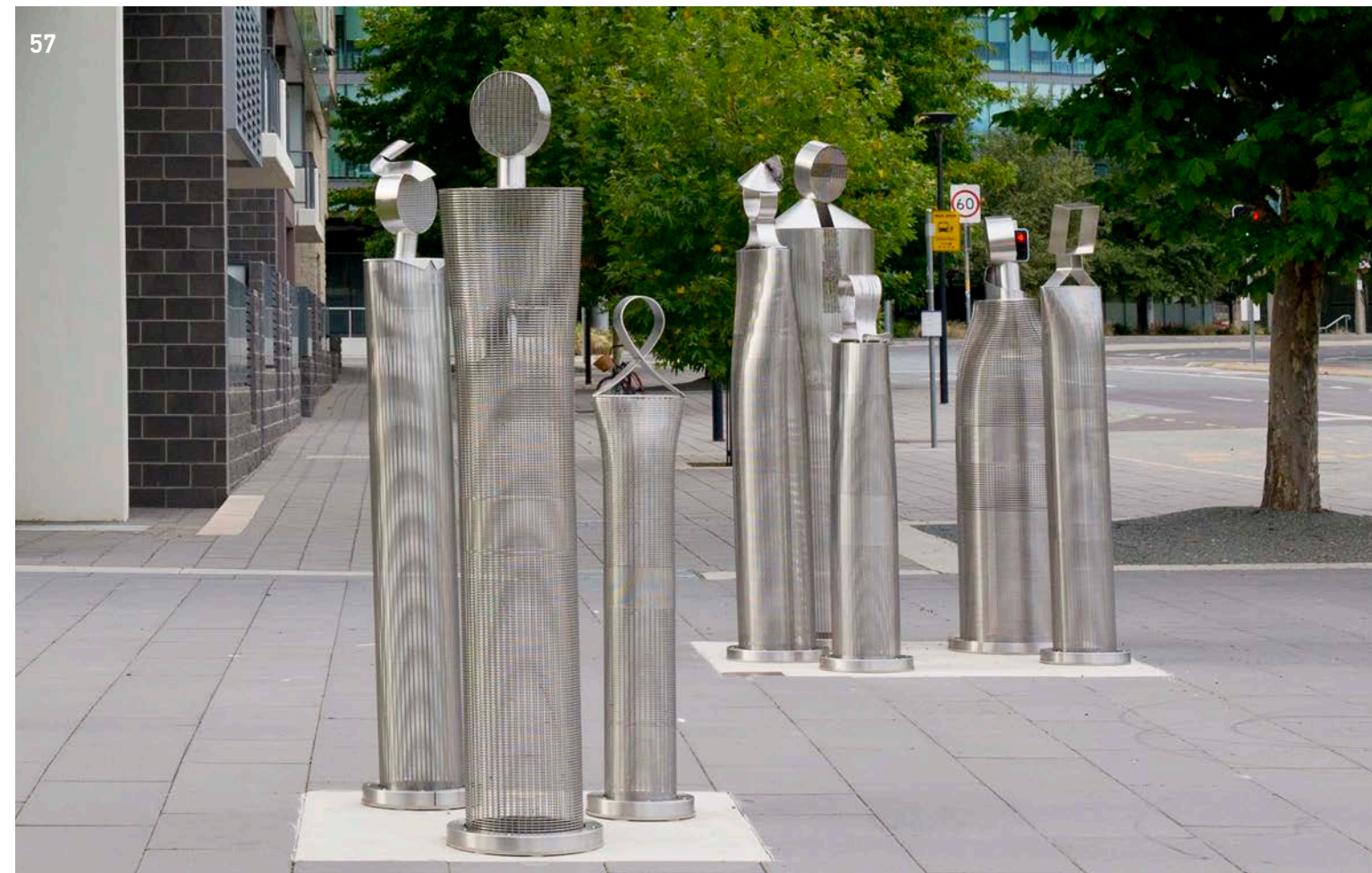
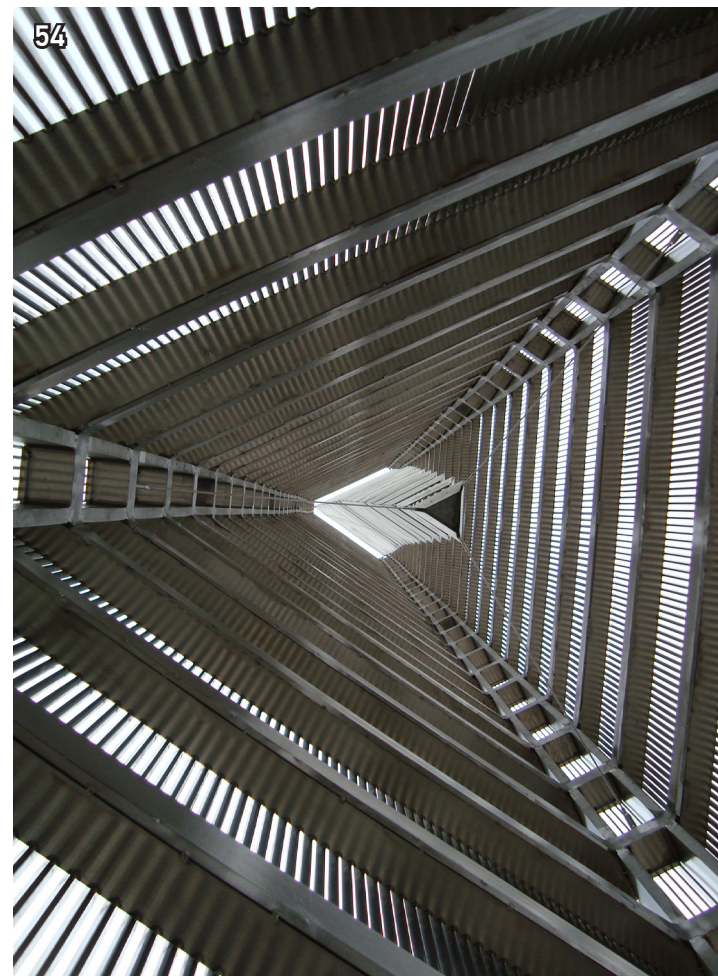
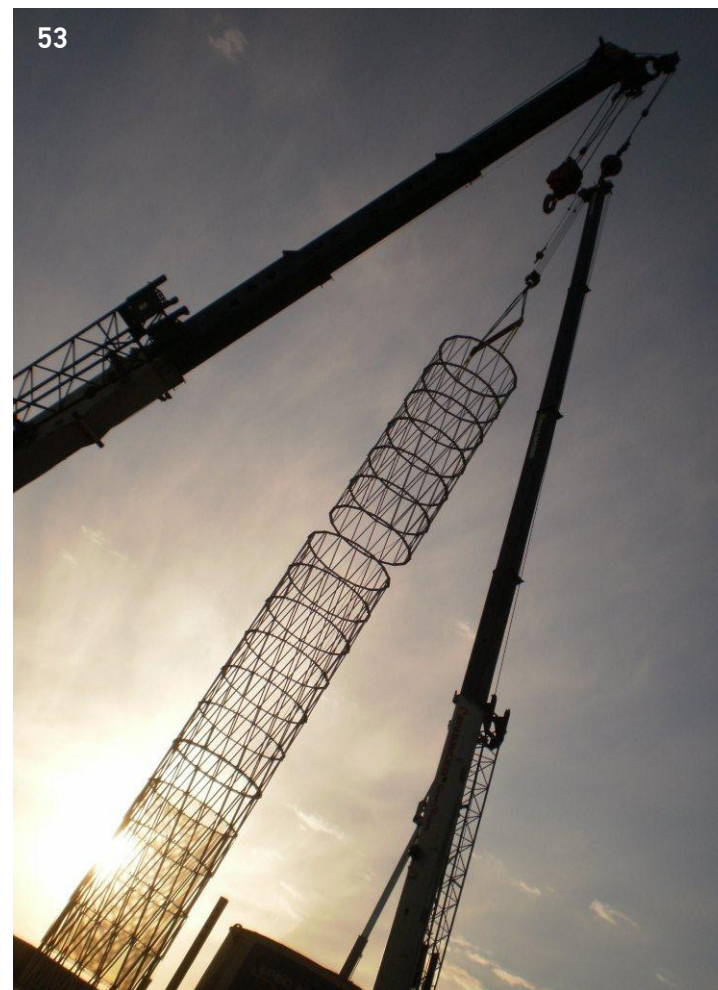
55. "The Hope" Light Tower – University of Nebraska Medical Center, Omaha, NE, USA Art Sculpture – A James Carpenter Design

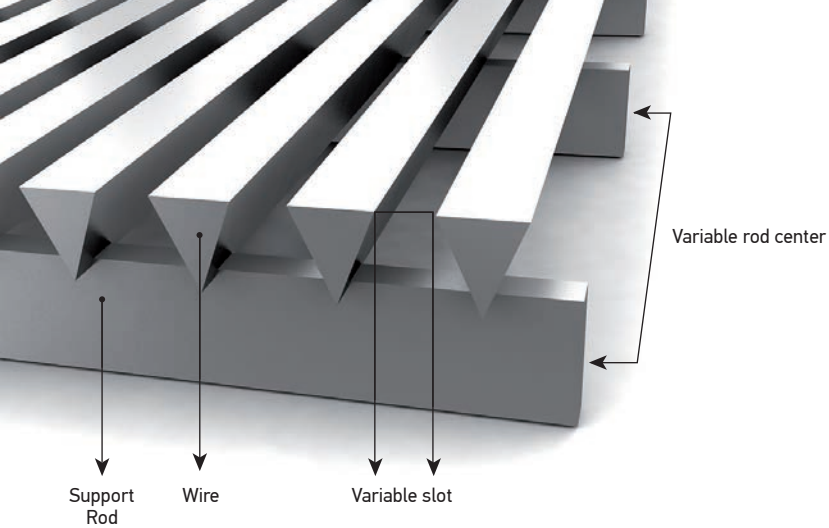
56. The Yards Park – Washington, DC, USA Art Sculpture

57. Anna Eggert "Here and Now" – Corner of London Circuit and Edinburgh Avenue, Civic, ACT, Australia – Art Sculpture Photo by David Paterson

"Architecture is the opportunity to manifest the natural world's material, structural and environmental beauty."

— James Carpenter





Aesthetic & Functional

The manufacturing process of Johnson Architectural Elements involves the continuous welding of wires onto support rods of different shapes and sizes in order to obtain a structure that is solid, resistant and aesthetic. Countless combinations are available to architects by varying dimensions, slot sizes and tilt of rods and wires — creating freedom in the creative process and approach

SHAPES AND FORMS

Screens can be flat, cylindrical or curved. Shapes can be round, straight or oblique, as well as inside out.

FINISH

Different types of finishes are available, depending on the final application and aspect required (pickling, passivation, electro-polishing, sandblasting, powder coating, etc.).

FRAMING

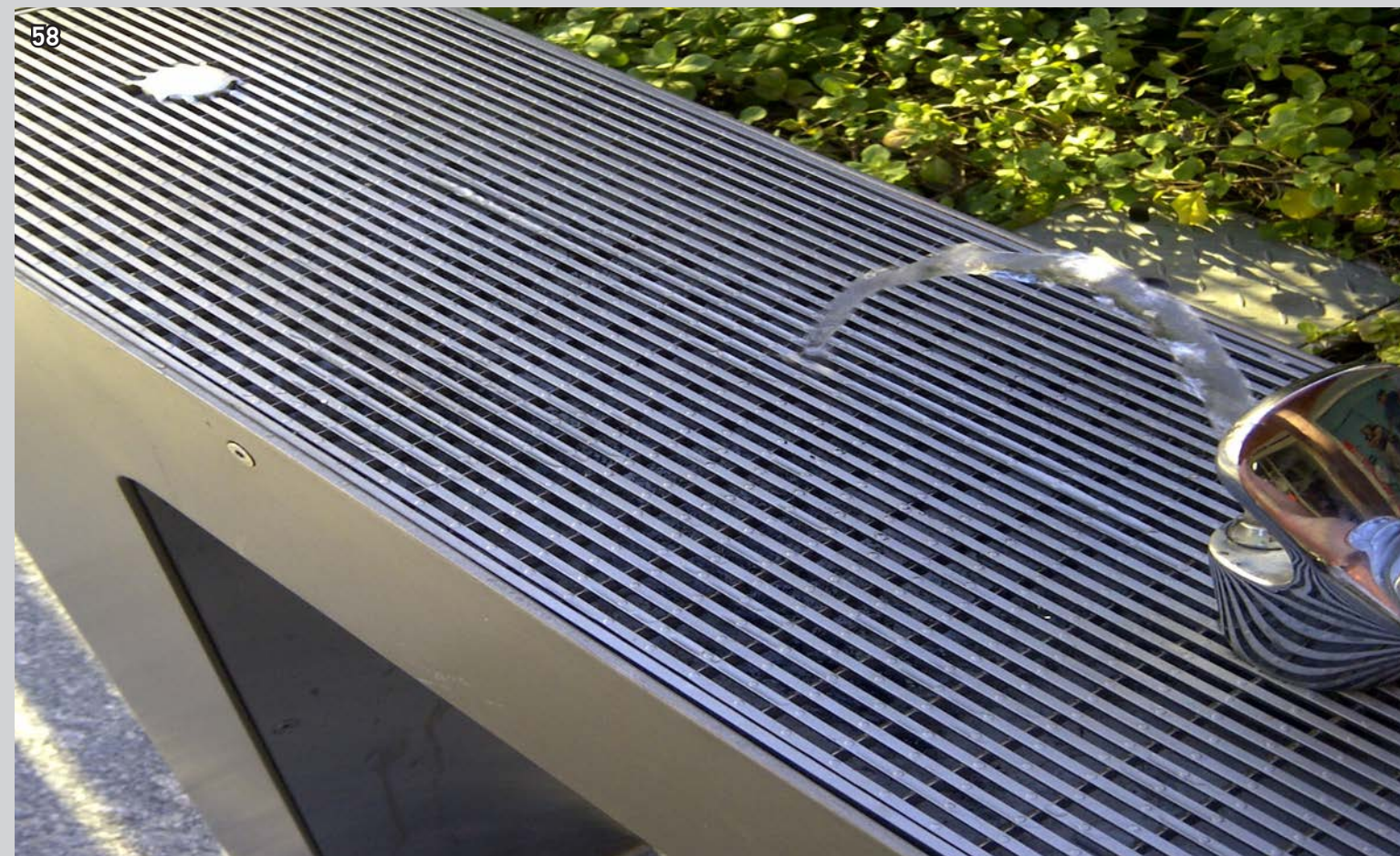
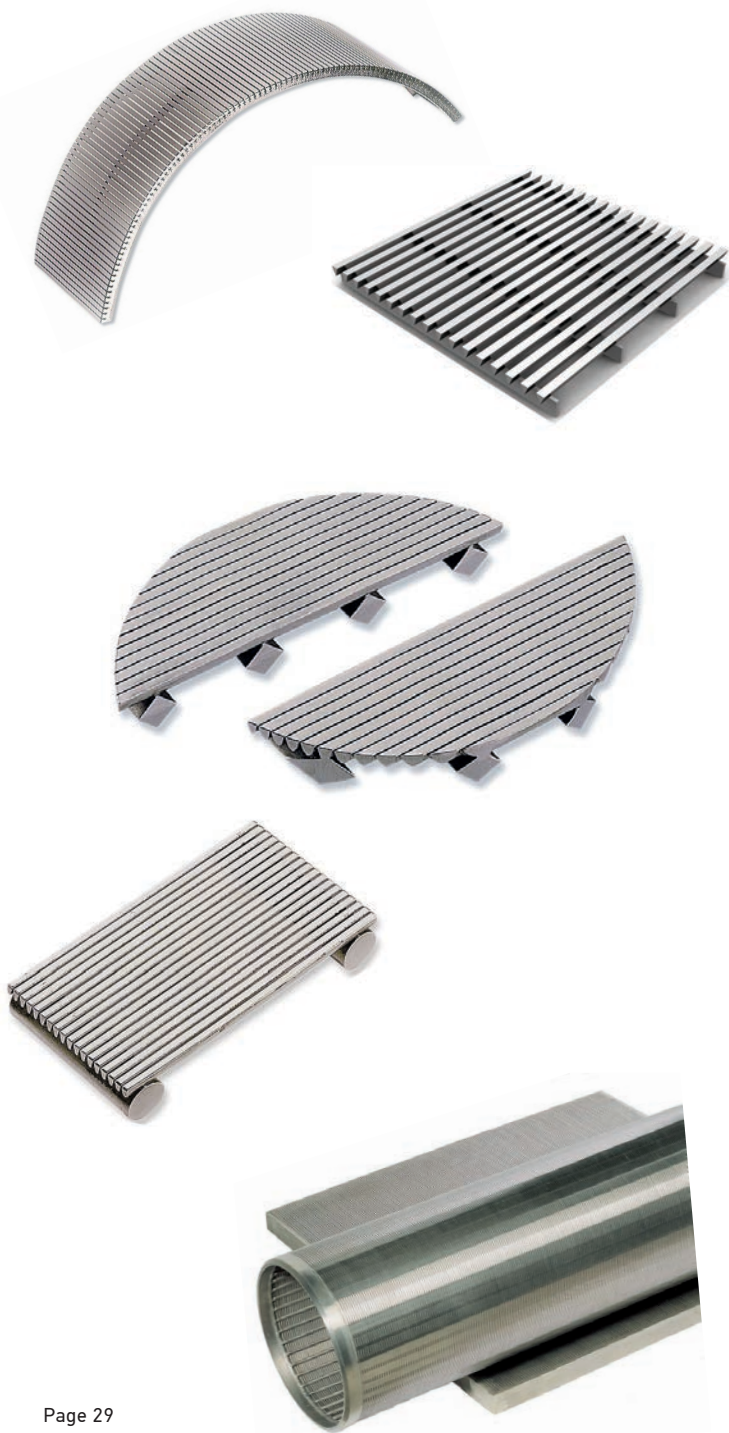
We can supply panels or a fully framed structure with all the necessary attachments. Framing increases the construction rigidity while giving an aesthetic finish. It also makes installation easier.

ENGINEERING CAPABILITIES

Combination of our skills, experience and advanced technologies, is an asset to many architectural firms looking at innovative concepts and designs.

CLEANING AND MAINTENANCE

Steel Brite™ cleaner is designed specifically for the cleaning and protection of exposed stainless steel architectural pieces. Outside environmental elements can cause surface staining on stainless steel products. Architectural pieces will retain their new appearance and shine by applying the simple-to-use, environmentally-friendly, two-step process of Steel Brite and Passivator Rinse.



INSPIRATION IN PRACTICE

Custom Applications

Custom applications are the strength of Johnson Architectural Elements. We leverage our specialized design engineering and manufacturing expertise with the creative concepts of architects and designers to create the functional, as well as the original.

58. Flinders Street Mall – Townsville, Australia
Drinking Fountain

59. Ramsgate RSL - Sans Souci, Australia
Drainage Trays

60. Kitchen – Minneapolis, MN, USA
Bench Base



NORTH AMERICA

+1 651 636 3900 *Phone*
+1 651 638 3171 *Fax*
info.johnsonscreens.us@aqseptence.com

AUSTRALIA - ASIA PACIFIC

+61 7 3867 5555 *Phone*
+61 7 3867 5566 *Fax*
info.johnsonscreens.au@aqseptence.com

EUROPE

+33 5 49021600 *Phone*
+33 5 49021616 *Fax*
info.johnsonscreens.fr@aqseptence.com

INDIA

+91 (0) 2717 618000 *Phone*
+91 (0) 2717 618010 *Fax*
info.johnsonscreens.in@aqseptence.com

JAPAN

+81 45 661 3575 *Phone*
+81 45 661 1921 *Fax*
info.johnsonscreens.jp@aqseptence.com

ARGENTINA

+54 11 4714 6699 *Phone*
+54 11 4714 2175 *Fax*
info.johnsonscreens.ar@aqseptence.com

BRAZIL

+55 11 4341 5777 *Phone*
+55 11 4393 0414 *Fax*
info.johnsonscreens.br@aqseptence.com

CHILE

+56 02 9280700 *Phone*
+56 02 9280705 *Fax*
info.johnsonscreens.cl@aqseptence.com



NORTH AMERICA HEADQUARTERS

+1 651 636 3900 *Phone*
+1 651 638 3177 *Fax*

1950 Old Hwy 8 NW
New Brighton, MN 55112

johnsonarchitecturalelements.com

Johnson Architectural Elements has sales and manufacturing locations around the world, which allows for stronger collaboration, faster production and lower shipping costs. Our team is here to support you through every step of the process, no matter where inspiration strikes.

© 2019 Aqseptence Group, Inc. All rights reserved. Aqseptence Group, Inc. assumes no liability for possible errors in catalogs, brochures and other printed material. The technical data in this brochure is subject to change and for illustrative purposes only and should not be applied as published to your individual case. Aqseptence Group reserves the right to alter its products without notice. Any reproduction, distribution, display or use of this information in whole or in part without written authorization of Aqseptence Group is strictly prohibited.
02.1400.01

 **Aqseptence
Group**
www.aqseptence.com

